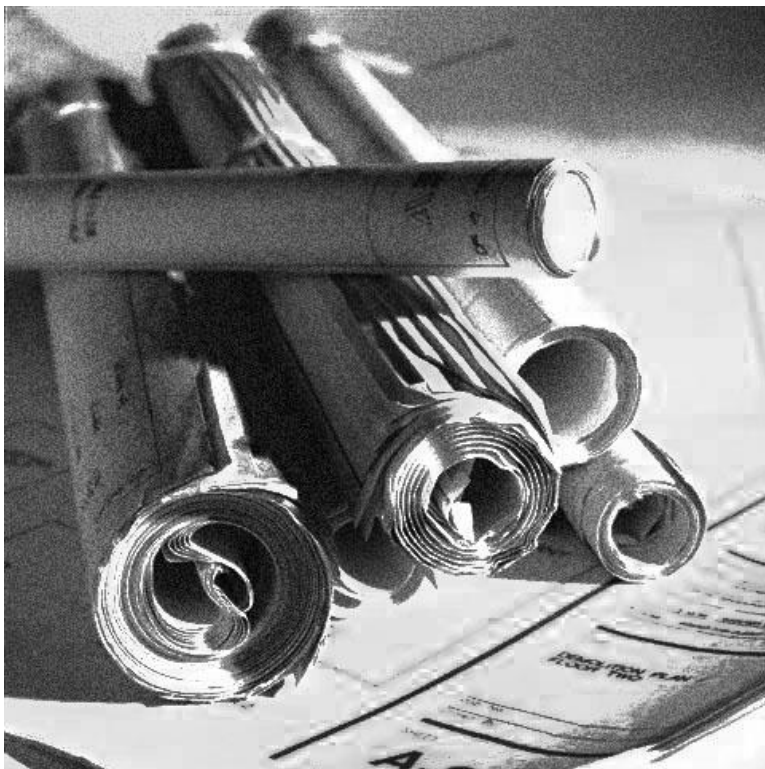




2205 Walnut Street – Columbus, TX  
Ph: 979.732.3114 – Fax: 979.732.5271  
[www.franksurveying.com](http://www.franksurveying.com)

## Statement of Qualifications



Professional Land Surveying  
And Mapping Services

2011

# LETTER OF INTEREST

To Whom It May Concern:

The management and professional staff of Frank Surveying Co., Inc would like to present you with our Letter of Interest and Statement of Qualifications to provide Professional Land Surveying and Geographic Information Systems (GIS) services. Our objective in submitting this Statement of Qualifications is to convince you that our firm should be selected for your needs on a project or contractual basis.

Frank Surveying Co., Inc. has a legacy of successfully delivering top-quality performance on schedule, within budget and tailored to the individual needs of the client. We are a diverse firm with primary areas of expertise in land surveying and digital mapping services. Our clients include governmental agencies, school districts, churches, utility districts and a great number of private sector developers throughout the State of Texas. During the last 40 years, Frank Surveying Co., Inc. has completed thousands of topographic surveys, boundary surveys, and mapping projects, some of which will be further detailed herein. Frank Surveying Co., Inc. has one principal office located in Columbus, Texas and is an Equal Opportunity Employer completely compliant with governmental regulations.

Many of our staff is cross-trained, allowing them to switch between several roles, thus increasing our flexibility in meeting our client's scheduling needs. We have the facility and equipment inventory to rapidly and inexpensively increase our staffing levels to meet a constantly changing workload.

Frank Surveying Co., Inc. carries a General Liability Insurance Policy with a two million-dollar limit of liability and a Professional Liability Insurance Policy with a one million-dollar limit of liability as well as Workman's Compensation Insurance. Certificates of Insurance are available upon request.

We routinely work with a great number of private sector clients who require land surveying and land development assistance. Frank Surveying Co., Inc. has also earned a reputation for excellence with City and County government officials, developers, contractors and consultants throughout the State of Texas.

Enclosed you will find our breakdown of specifications including qualifications, expertise and references in Land Surveying and Geographic Information Systems (GIS).

I sincerely believe that upon review of our credentials, you will determine that Frank Surveying Co., Inc. will perform the best possible services with the highest level of efficiency and professionalism. Thank you for your time and considerations.

Sincerely,  
FRANK SURVEYING CO., INC.

*Matthew W. Loessin*

President

Email: [matthew@franksurveying.com](mailto:matthew@franksurveying.com)

Website: [www.franksurveying.com](http://www.franksurveying.com)

## **QUALIFICATIONS & EXPERTISE**

Frank Surveying Co., Inc.'s experienced field crews and in-house support staff believes we provide our clients with the most cost effective, high quality and accurate survey services in the industry. Our services range from simple boundary surveys to complex issues such as construction staking, residential and construction development projects and American Land Title Association (ALTA) surveys.

### Land Surveying Services:

- ❖ Boundary Surveys
- ❖ Topographic Surveys
- ❖ ALTA/ACSM Title Surveys
- ❖ TSPS Category IA Title Surveys
- ❖ Legal descriptions and exhibits
- ❖ Boundary line adjustments
- ❖ Tree Surveys
- ❖ Horizontal & Vertical Control Surveys
- ❖ Deformation Monitoring
- ❖ Expert Witness Testimony & Consulting
- ❖ 3D Laser Scanning & HDS Services
- ❖ Construction Staking
- ❖ Hydrographic Surveying
- ❖ As-Built Surveys
- ❖ Engineering Support Surveys
- ❖ Subdivision Platting & Layout
- ❖ GPS Mapping & Location
- ❖ Oil & Gas Location Staking
- ❖ Unit and Lease Surveys
- ❖ Route Surveys
- ❖ 3D Elevation Modeling
- ❖ FEMA Elevation Certificates

The survey department of Frank Surveying Co., Inc. employs an effective project cost, schedule control and management information system, developed and tailored over many years of experience. Detailed communications, weekly staff meetings and daily briefs establish solid and thorough project performance. The management of Frank Surveying Co., Inc. exercises rigid internal controls regarding budgets, schedules, survey quality, project planning and implementation.

### Additional Services:

Although we do not directly perform the below services, Frank Surveying Co., Inc. has contacts throughout the state that enable us to offer specialized services to our clients.

- ❖ Aerial & LIDAR Mapping

Frank Surveying Co., Inc. also has working relationships with several engineering companies that offer civil, structural, and environmental engineering that allow us to perform large projects and offer complete client solutions.

### Equipment:

At Frank Surveying Co., Inc. we are capable of providing multiple field crews and several CAD stations. We utilize the latest in survey technology, including Leica VIVA GPS systems with long range RTK capabilities and Leica robotic total stations. Our firm is also a GPS base station owner in the Leica statewide real time GPS network. Our office staff operates AutoCAD 2011 Map with Carlson Survey software, ArcView 9.2 GIS software, and we provide large scale color plotting.

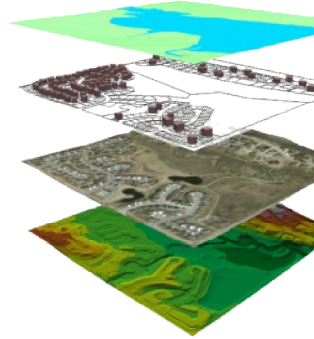
We have developed an in-house digital library for each project enabling us to allow all team members to obtain project information in various formats (CAD, Word, Excel, Power Point, etc.), throughout the project life span.

Frank Surveying Co. Inc., has also developed strict standards that allow us to expect consistent results in the preparation and formatting of drawings and documents.

Frank Surveying Co., Inc. has integrated the latest GIS technology to provide the best geospatial solutions for our clients. These advanced GIS tools, in turn, assist our clients in making sound business decisions throughout their projects. Combining GIS with our survey department allows Frank Surveying Co., Inc. to provide our clients the spatial analysis tools that provide solutions to complex problems.

**GIS Services:**

- ❖ Asset Mapping
- ❖ Mobile Mapping Solutions
- ❖ Data & Attribute Collection
- ❖ Modeling & Planning
- ❖ Utility & Infrastructure Mapping
- ❖ Consulting Services
- ❖ Ranch Mapping
- ❖ Aerial Photography Overlays



Frank Surveying Co., Inc. has the ability to integrate multi-disciplinary services into customized GIS solutions so that our client receives a high quality solution from a single source. Detailed communications, weekly staff meetings and daily briefs establish solid and thorough project performance.

Since we also perform land surveying services, we understand the importance of creating and maintaining an accurate GIS, and utilizing our survey department's experience we are able to produce accurate base maps and capture accurate attribute data that minimizes cost and allows for an expedited service.

**Equipment:**

Frank Surveying Co., Inc. is able to offer the unique service of being able to provide survey grade accuracy to GIS projects as well as sub-meter mapping services. We utilize Leica GPS for our field collection of GIS data and ESRI ArcView GIS and AutoCAD 2011 Map software for office mapping and processing. We also have large format color plotting capabilities that enable us to produce maps in-house.

**Westview Village**  
Sealy, Texas

**Project Size**  
6.3 Acres  
21 Lots

**Completed**  
2009

**Owner**  
Ranch Country Homes

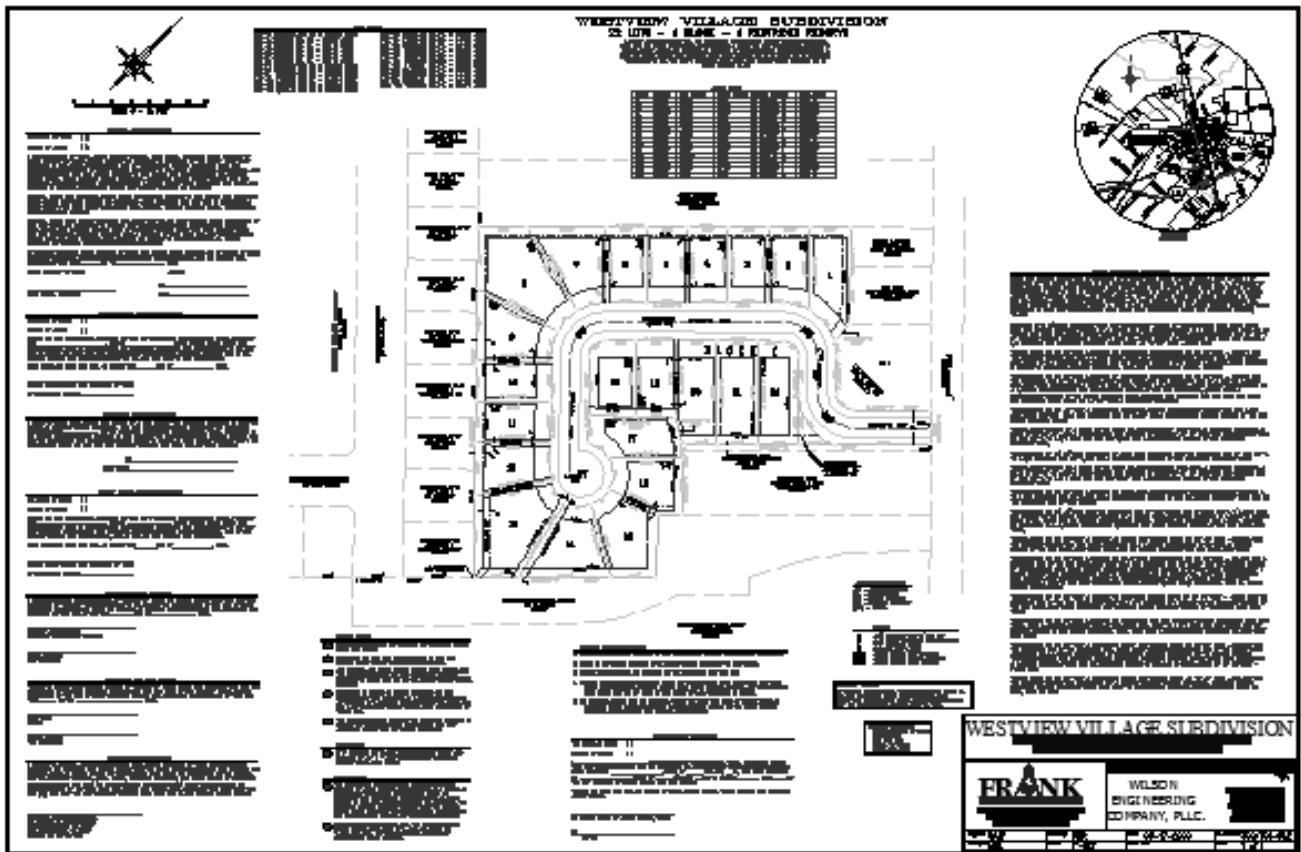
**Services**  
Boundary & Topographic Survey  
Planning  
Construction Staking  
Form & Final Surveys

Development of this parcel involved strategic coordination with the developer and city. This development was a part of the city's in-fill subdivision requirements.

A requirement also for this project was to survey and produce a 3D model of the adjoining drainage ditch for further expansion and future drainage issues. Numerous coordination and design meetings were held with the Client and City in order to meet all parties' requirements.

The use of careful planning and coordination with the project civil engineer allowed the developer to maximize their use of the site.

Since this site was an in-fill project fit between existing developments careful coordination was required in order to meet the City's design standards while still enabling the developer to build a product they were comfortable with.



**Industry State Bank**  
Columbus, Texas

**Project Size**  
1.377 Acres

**Completed**  
2010

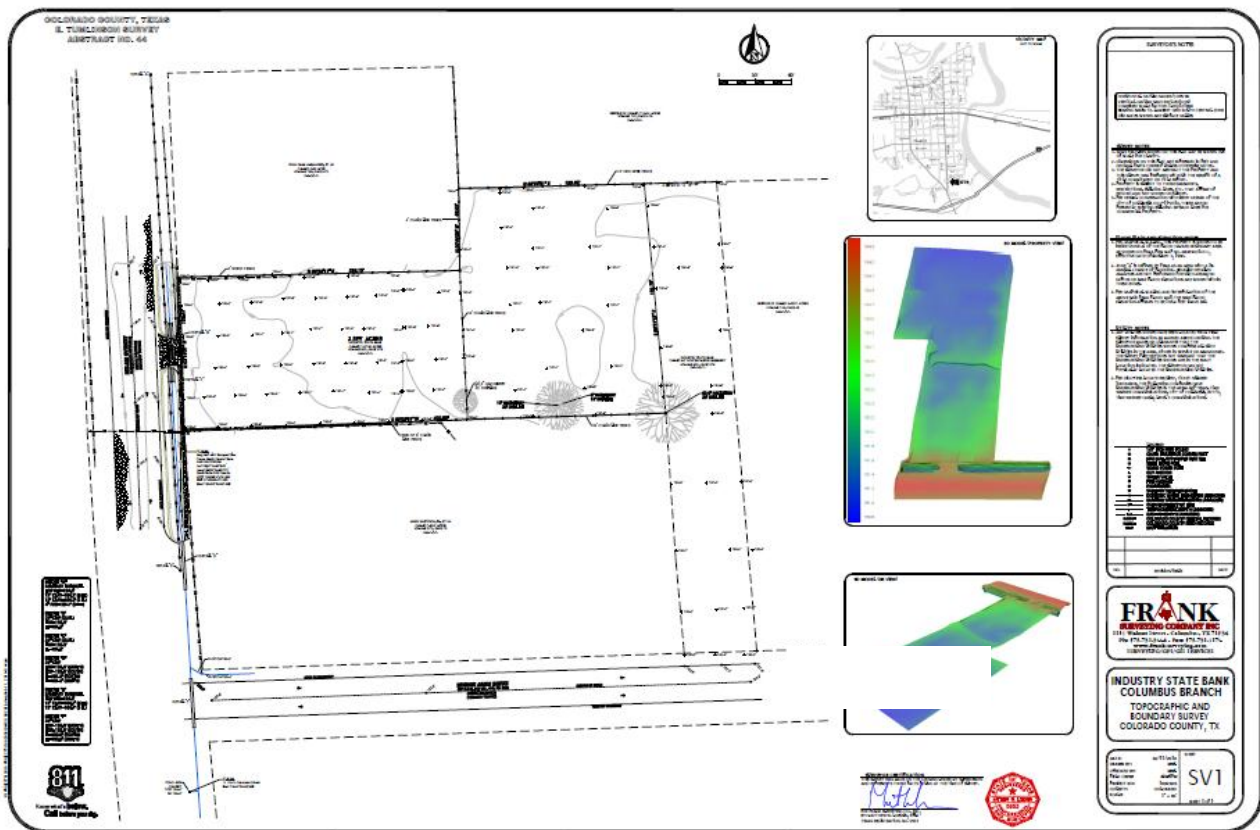
**Owner**  
Industry State Bank

**Services**  
Boundary & Topographic Survey  
Base Flood Elevation Determination  
3D Elevation Models  
Tree Survey

Provided boundary and topographic survey for a future branch location of Industry State Bank.

Frank Surveying Co., Inc. also provided detailed drainage elevation data to assist the project civil engineer in developing a drainage plan.

Site was also located in FEMA Zone "A" and "AE" and as a scope requirement Frank Surveying Co., Inc. performed a base flood elevation determination for the site.



**City Limit and ETJ Map**  
Sealy, Texas

**Project Size**  
City of Sealy and surrounding areas

**Completed**  
2009

**Services**  
GIS Mapping  
Geo-referencing of Parcel Maps

As a requirement of the State of Texas, the city was to create a digital map of the current city limits and extra territorial jurisdiction area.

The City of Sealy was seeking an alternative to their existing paper maps and Frank Surveying Co., Inc. offered the solution of a dynamic GIS map which would allow for future changes to be made in a cost effective manner.

The services included deed plotting of annexation tracts acquired by the city and geo-referencing them to existing county parcel maps. Field data collection was also performed to verify common control points and to also establish a common coordinate system between the various data sets.

Final product included the delivery of large formal paper drawings, shape files, and data sets.



**Regional Detention Pond**  
Austin County, Texas

**Project Size**  
16 Acres

**Completed**  
2008

**Owner**  
David Cryan

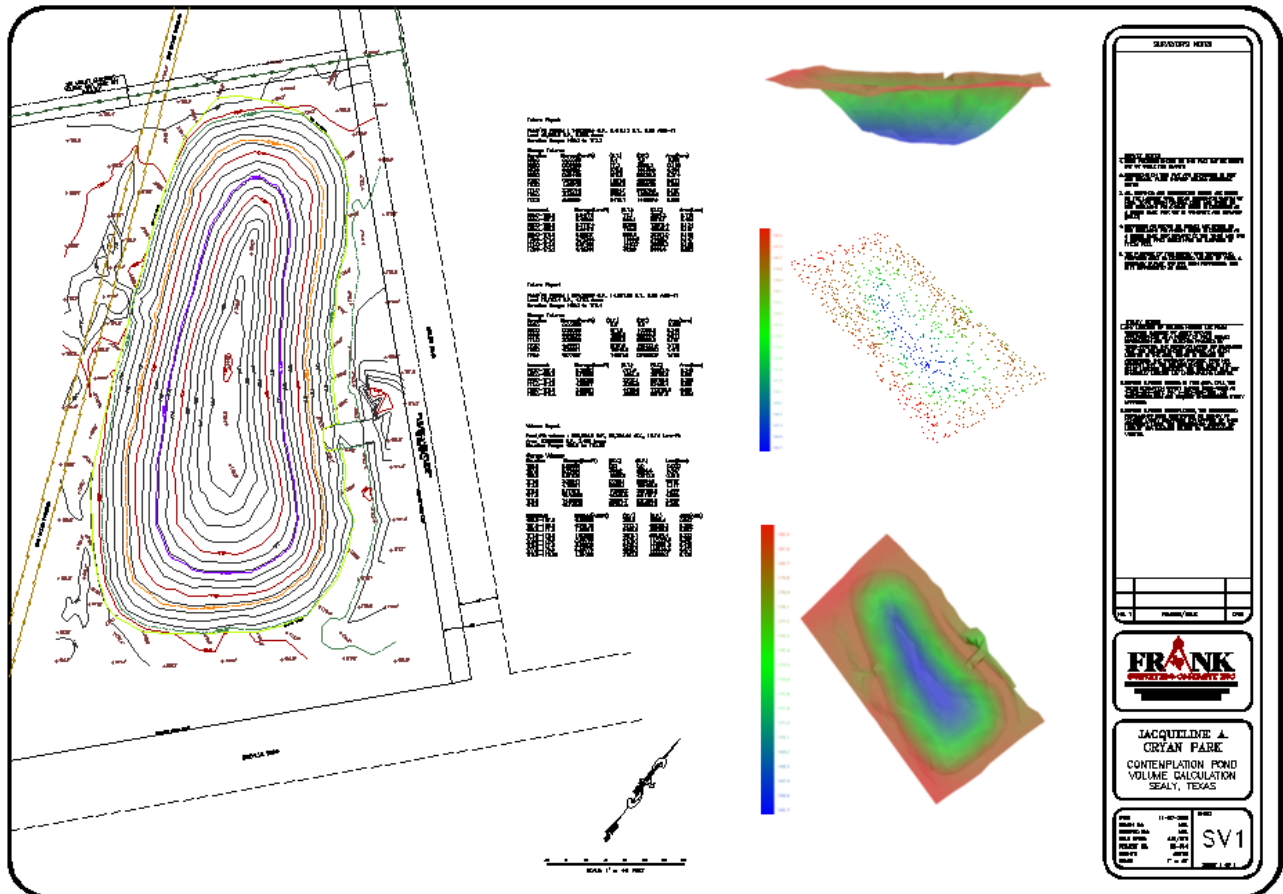
**Services**  
Topographic Survey  
3D Modeling

The owner was required to submit detailed drawings to review agency for approval of capacity of detention pond.

Combining both GPS and conventional surveying methods Frank Surveying Co., Inc. demonstrated its ability to provide accurate as-built drawing information to verify contractor quantity removal.

On areas that were inaccessible to personnel, Frank Surveying Co., Inc. was able to utilize reflectorless survey instrumentation to obtain measurements, thus providing a safe but cost effective method of obtaining data.

Final product consisted of digital deliverables to the review agency, 3D models of pond, and quantity calculations.



**Project Size**  
1,046 Acres

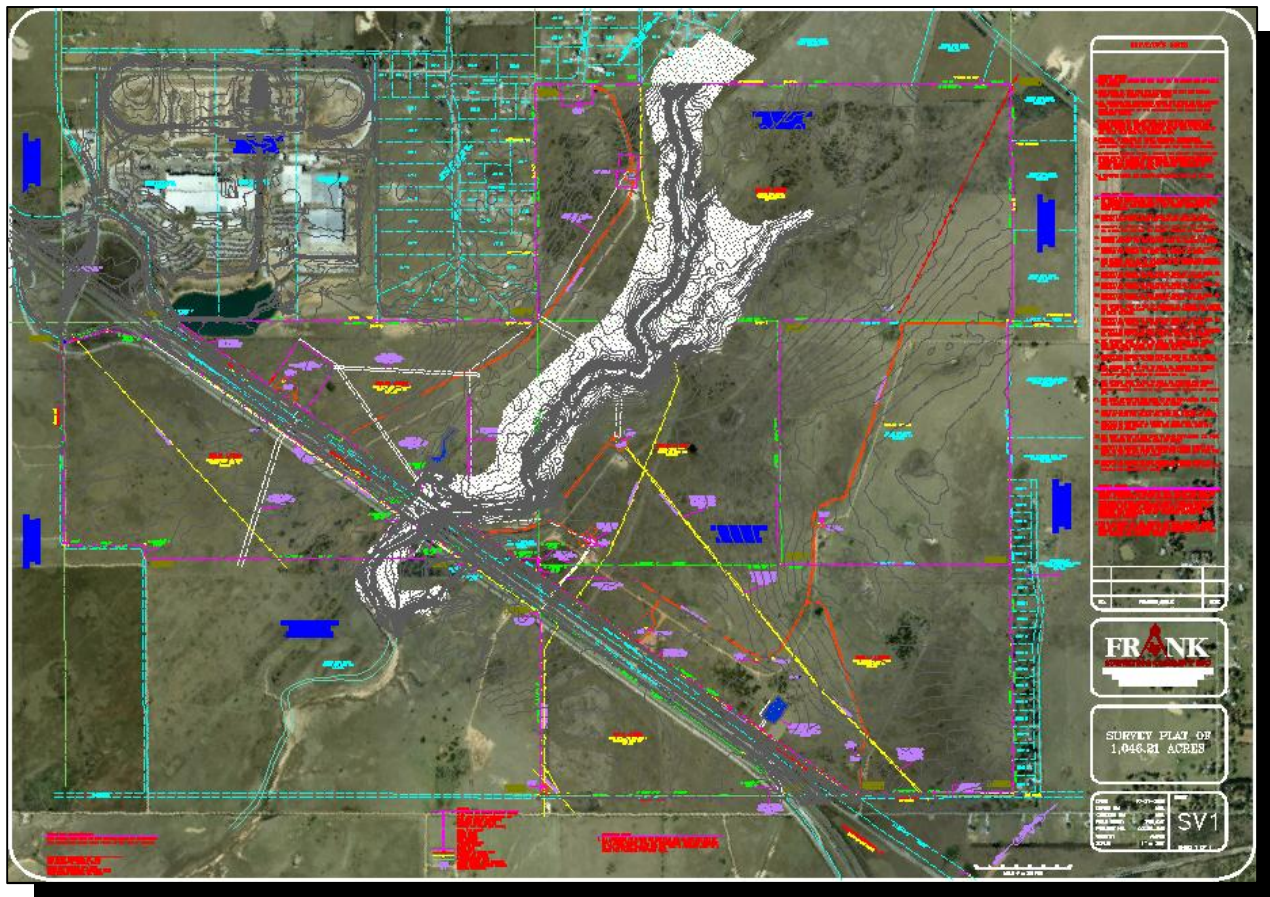
**Completed**  
2009

**Services**  
Boundary Survey  
Aerial Mapping  
Elevation Contour Modeling  
Flood Plain Analysis

Frank Surveying Co., Inc. performed a large and complex boundary survey and merged that information with aerial photography and digital contour information to produce a multi-use final product for our client.

Portions of this boundary had not been surveyed since the original patent from the State of Texas. We were able to recover original patent corners as a result of thorough research. Frank Surveying Co., Inc. also provided a title search for subject tracts as wells as over 50 easements that affected the property.

Final deliverable product was a boundary survey referenced to state plane coordinates, digital CAD files, flood plain overlay, and digital contour information.



**MATTHEW W. LOESSIN, RPLS**  
Professional Land Surveyor  
President

**Education**

Texas A&M University - Corpus Christi, TX  
Bachelor of Science - Geographic Information Science with Geomatics Emphasis

**Professional Licenses**

Registered Professional Land Surveyor No. 5953  
State of Texas, January 2006

**Experience**

Professional Land Surveyor/President - 2006 to present

Survey experience includes over 15 years of involvement in large scale boundary and topographic surveys, ALTA surveys, aerial control surveys and construction surveying. Expertise includes engineering support surveys, subdivision platting, horizontal and vertical control surveys, Global Positioning System (GPS), and municipal projects.

Geographic Information Systems (GIS) experience includes ESRI ArcView and ArcGIS 3.3 through current version and AutoCAD Map 3D. Creation of city limit and ETJ maps for various municipalities and presentation maps for land developers and clients. Proficient in various programming languages including C++, Visual Basic, and HTML.

**Project Roles**

Matthew is responsible for representation of clients for planning commissions, city council & county commissioner's court meetings and other public hearings.

He is also responsible for managing the project with the client's needs in mind, is the principal project manager that sets and maintains scope of work, budget, and performs quality control on all final documents and secures a timely project schedule.

**Professional Affiliations**

Member - Texas Society of Professional Surveyors (TSPS)  
Member - Texas Surveyors Foundation, Inc. (TSFI)  
Member - American Congress on Surveying and Mapping (ACSM)  
Member - American Society of Civil Engineers (ASCE)  
Elected - Colorado County Surveyor

**VALORIE A. LOESSIN**  
Business Manager  
Vice-President

**Education**

Texas A&M University - Corpus Christi, TX  
B.B.A. Accounting

**Experience**

Over seven years of professional accounting experience with a background in public and corporate accounting.

**Project Roles**

Supervises and directs staff employees in day-to-day tasks, presents information of the survey department's progress, develops and maintains budgets and all other company financial matters.

**WILLIAM T. HARRISON**  
Project Manager

**Experience**

Over five years of land surveying experience in performing boundary and topographic surveys and residential land development projects.

**Project Roles**

Maintains the scope of work, performs quality control, and ensures project schedules are met. William is also a field representative for onsite client meetings.

**ANDREW J. MONTGOMERY**  
Project Manager

**Experience**

Over 12 years of land surveying experience in performing boundary and topographic surveys. Previous experience has been in engineering support surveys and sub-surface utility engineering.

Andrew is a certified CST Level II Survey Technician and has vast experience in commercial and construction survey.

**Project Roles**

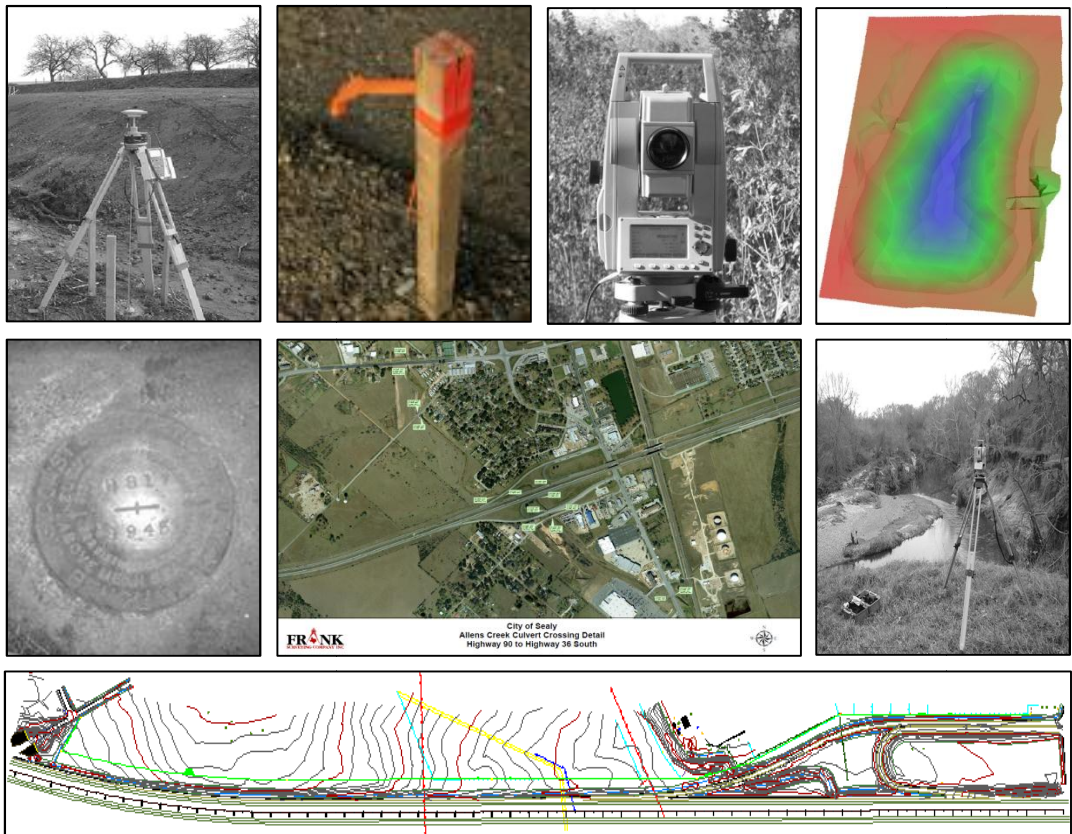
Maintains the scope of work, performs quality control, and ensures project schedules are met. Andrew is also a field representative for onsite client meetings.

## PAST PERFORMANCE - REFERENCES

Frank Surveying Co., Inc. has a legacy of successfully delivering top-quality performance on schedule, within budget and tailored to the individual needs of the client. We are a diverse firm with primary areas of expertise in land surveying and digital mapping services. Our clients include governmental agencies, school districts, churches, utility districts and a great number of private sector developers throughout the State of Texas. During the last 40 years, Frank Surveying Co., Inc. has completed thousands of topographic surveys, boundary surveys, subdivisions, and other surveying and mapping services.

Frank Surveying Co., Inc. has been instrumental in setting new standards in development procedures at many levels. In Colorado County, we were a major stakeholder in establishing a new set of subdivision platting regulations. We also provided consultation with the City of Sealy for new development regulations as well as assistance in selecting an aerial survey provider for the city's drainage needs.

We were also selected in 2009 as a recipient of the Houston Area Better Business Bureau's Award of Excellence and were chosen as the Winner of Distinction in our category.



- PROJECT:** I-10 WEST BOUND FRONTAGE ROAD  
**CONTACT:** *Chris Coffman*  
*City of Sealy City Manager*  
**TELEPHONE:** *979.885.3511*  
Topographic and boundary surveying services for 1.1 miles of proposed right of way acquisition and design of future frontage road along Interstate No. 10 corridor.
- PROJECT:** SEALY ETJ AERIAL SURVEY CONTROL  
**CONTACT:** *Bill L. Johnson, Sr.*  
*DAS, Inc.*  
**TELEPHONE:** *214.349.2200*  
Performed GPS ground control and aerial photo panels for aerial photography and digital contouring for City of Sealy drainage study.
- PROJECT:** ACME BRICK PLANT, AUSTIN COUNTY  
**CONTACT:** *Hayward Baker*  
**TELEPHONE:** *817.753-7000*  
Vertical deformation monitoring of building slab and brick kiln during construction of vertical piles to stabilize movement of concrete slab. Tasks included: establishment of vertical control, daily monitoring of subsidence of concrete slab, summary report of daily reading over four month period.
- PROJECT:** POLK COUNTY IAH PRISON  
**CONTACT:** *Wilson Engineering*  
**TELEPHONE:** *979.885.3344*  
Boundary and topographic survey of 90 acre existing and proposed expansion of IAH Prison. Tasks included: boundary survey and location of all easements, as-built drawings of existing features, topographic survey of entire site for new expansion and construction staking for new structures and infrastructure.
- PROJECT:** TRIPLE JJJ RANCH - 3,800 ACRES  
**CONTACT:** *Metro National Corporation*  
*Loretta Shumway*  
**TELEPHONE:** *713.973.3517*  
Category IA title survey of 3,800 acres in Burleson County. Tasks included: boundary survey and all easements affecting property and location of all improvements situated on property.
- PROJECT:** GREAT OAKS RANCH  
**CONTACT:** *Lane Wall*  
*Signor Development*  
**TELEPHONE:** *936.537.6339*  
Subdivision development of 210 acres in Washington County, Texas. Tasks included: coordination with county and review agencies for subdivision plat and regulations, establishment of base flood elevations along flood hazard area, and full construction staking of infrastructure.
- PROJECT:** WESTVIEW VILLAGE  
**CONTACT:** *Stephen Cryan*  
*Ranch Country Homes*  
**TELEPHONE:** *979.885.6262*  
Residential development of 21 lots. Tasks included: boundary and topographic survey of site and existing drainage ditch, preparation of easements for drainage easements, platting and lot layout, construction staking of utilities and road grade. Follow up services have been for form, slab, and final surveys of new home construction.

**PROJECT:** CITY OF SEALY CITY LIMIT AND ETJ MAP

**CONTACT:** *Kimberly Brooks*  
*Director of Planning*

**TELEPHONE:** *979.885.1669*

GIS digital mapping services for creation of city limit and extra territorial jurisdiction map. Tasks included: deed plotting of existing city annexation tracts, geo referencing deed tracts with county parcel maps, and creation of 1-mile buffer zone for ETJ.

**PROJECT:** BLENCOR FREEZER PLANT

**CONTACT:** *Shane Sampels*  
*ssampels@blencor.com*

Provided construction staking and as-built surveying services. Tasks include: staking of form boards and anchor bolt locations for a 150,000 square foot pre-fabricated steel building and staking of plant roads, utilities, detention pond and other infrastructure on a 15 acre site. Services also included providing an as-built survey of finished construction.

**PROJECT:** COLUMBUS ARMORY BUILDING

**CONTACT:** *Phillip Bologna*  
*PBK Architects*

**TELEPHONE:** *713.965.0608*

Topographic and boundary surveying services for a renovation of the existing armory building. Task included: topographic and boundary surveying, and location of underground utilities.

**PROJECT:** B&PW Park Pond Expansion

**CONTACT:** *David P. Kelly, II, P.E.*  
*DPK Engineering, LLC.*

**TELEPHONE:** *281.346.2616*

Provided as-built topographic survey of expansion of city detention pond. Tasks included: cross sections of pond and verification of drainage structures. Final product included 3D elevation model of pond, and calculation of excavation quantities.

**PROJECT:** TOWN PARK CENTER

**CONTACT:** *David Cryan*  
*979.885.6262*

Commercial Mixed Use Development. Services being provided are boundary and topographic survey of 72 acre development, elevation and flood plain area determinations along drainage creek, and platting services and coordination for preliminary and final plat.

**PROJECT:** LAKE BUCHANAN WATER STORAGE TANK

**CONTACT:** *Jack Chisholm, RPLS*  
*LCRA*

**TELEPHONE:** *512.369.4129*

Provided boundary surveying services for proposed area of new water storage tank. Tasks included: perimeter survey of parent tract, providing state plane coordinates for boundary corners, and adherence to LCRA survey standards.